



Learning Paths - Level 01

# Deploying Liferay

# Session Breakdown

05 min	01	Introduction + Session Scope
05 min	02	Liferay Deployment Options
05 min	03	Liferay SaaS Provisioning
05 min	04	Working with PaaS



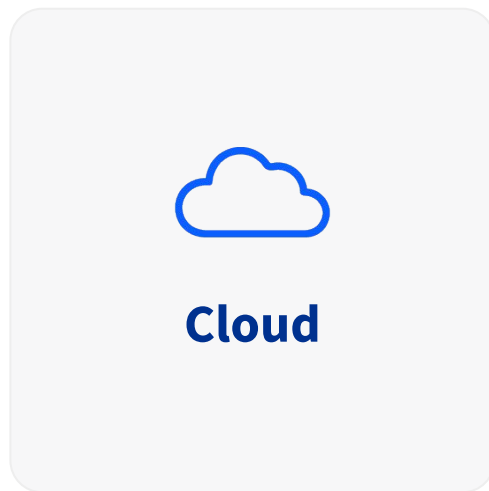
# Part 01

## Introduction and Session Scope

What do we mean when we say *deployment*

# Introduction to Deployment

- The term “deployment” is a very general concept that quite simply means to make the solution operational in a target environment
- In reality it is a laundry list of considerations such as:
  - Application uptime SLA
  - Infrastructure and application management
  - Monitoring and alerting
  - Hosting and security
  - Migrating code and security updates, and many more
- Above all, Clarity needs peace of mind that they can rely on the platform they choose





# Clarity's Critical Success Factors

1. Non-technical participation
- ✓ 2. Simplified maintenance (and evolution)
- ✓ 3. Future proofed and flexible
4. Increase engagement and user experience through personalization
- ✓ 5. Risk mitigation with better governance
- ✓ 6. Lower investment / total cost of ownership



# Part 02

## Liferay Deployment Options



# Supporting Every Deployment Approach

**SaaS**

Liferay  
**SaaS**

**PaaS**

Liferay  
**PaaS**

**Software**

Liferay  
**Self-Hosted**



# Overview



### Liferay Self-Hosted

- You have complete ownership
- Hardware and infrastructure
- Architecture + Platform-related software and configuration
- Preparation, management, and deployment of updates, patches, and security hotfixes for the entire stack
- Solution development



### Liferay PaaS

- Web Server
- Backups
- Search Engine
- Database
- DevOps CI/CD Pipeline



### Liferay SaaS

- Product support
- Application Uptime SLA
- Platform Software
- Cloud Architecture and Infrastructure
- Upgrades and Updates
- Patches and Security hotfixes

# Offering Comparison

Feature	Liferay SaaS	Liferay PaaS	Liferay Self-Hosted
Liferay DXP	✓	✓	✓
Customization via Client Extensions	✓	✓	✓
Customization via OSGi	✗	✓	✓
Cloud Infrastructure	✓	✓	On-Premise or Customer's Cloud
SDLC / DevOps Management Tools	✗	✓	✗
Tenancy	✓ Multi-tenant	✓ Single Tenant	✓ Single Tenant
Infrastructure Management	✓	✓	✗
Liferay DXP Upgrades & Patches	✓	✗	✗
Platform Managed Services	✓	Partner or Customer	Partner or Customer

# Part 03

## Liferay SaaS Provisioning

# Provisioning

- Process begins with Closed Won Opportunity
- Provisioning Form Shared with Customer/Partner
  - a. Project ID
  - b. Primary Region
  - c. Admin Contact(s)
  - d. Support Contact(s)
  - e. Incident Management Contact(s)
- Completion of form kicks off provisioning of systems

### Liferay Experience Cloud Provisioning Information

Please fill out...

Project Admin      Support      Incident Man...

1      2      3      4

Please fill out the information below.

\* Indicates Required Fields

**Organization Name \***

Please enter your organization name.

**Project ID \***

This will be the name of your Liferay Experience Cloud project, visible to team members when they log in to the Experience Cloud console. Select a meaningful name for easy project identification (e.g., choose "nycbankportal" instead of "portal"). Use lowercase letters or numbers only. Ensure that the Project ID does not exceed 16 characters.

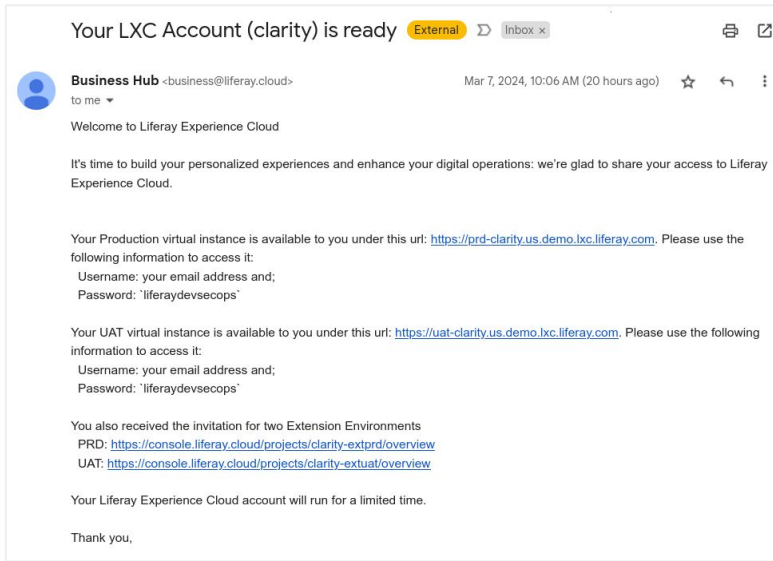
**Primary Region \***

This is where your Liferay Experience Cloud project is deployed. Please contact your Account Manager if you are not sure which region was selected for the project.

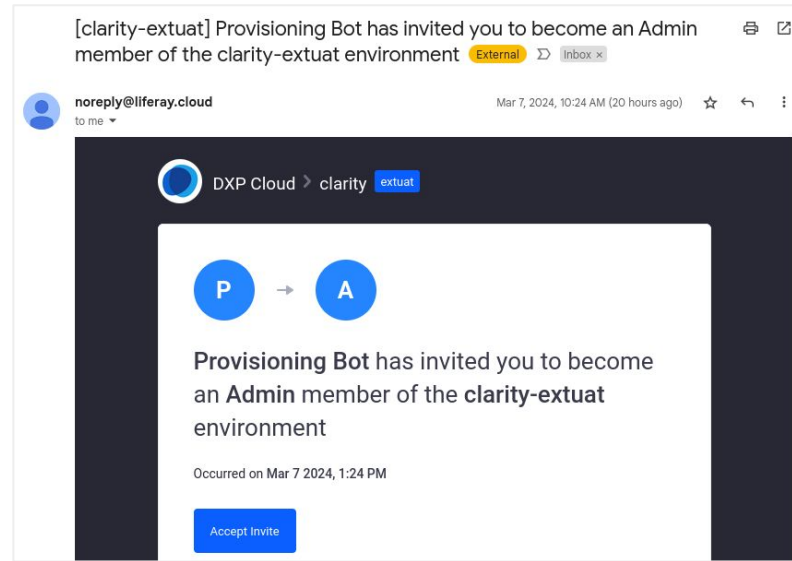
[Next](#)

# Invitations

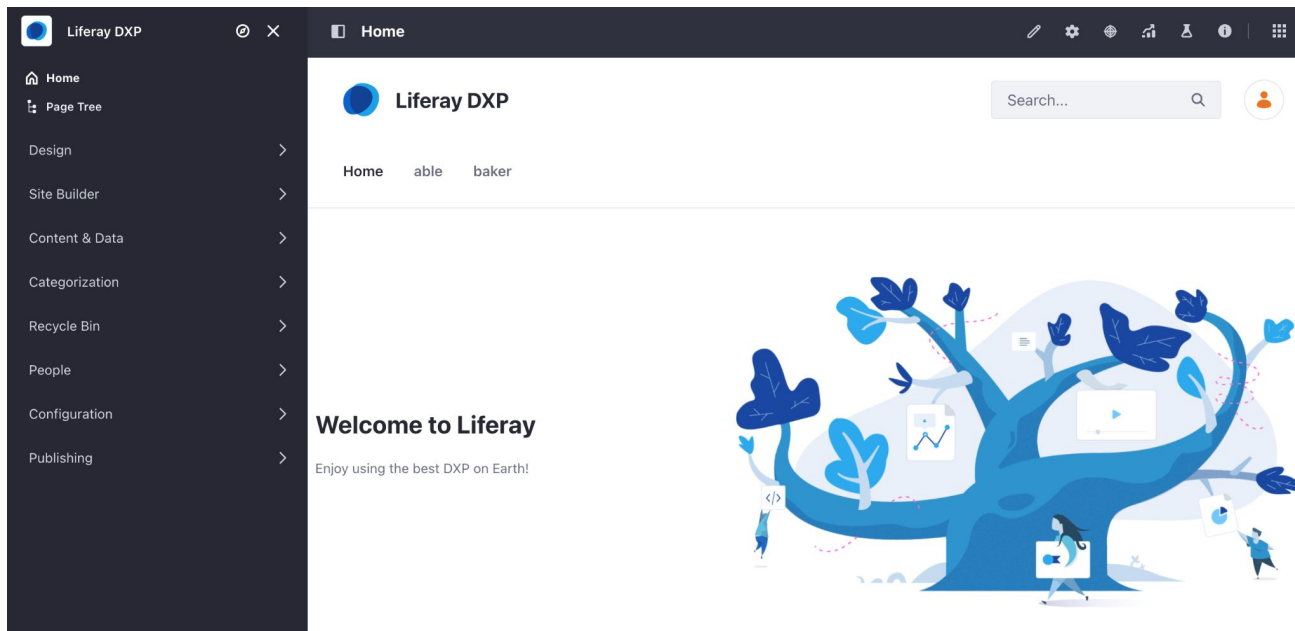
- Production (PRD)
- Test (UAT)



- Production Ext (PRD)
- Test Ext (UAT)

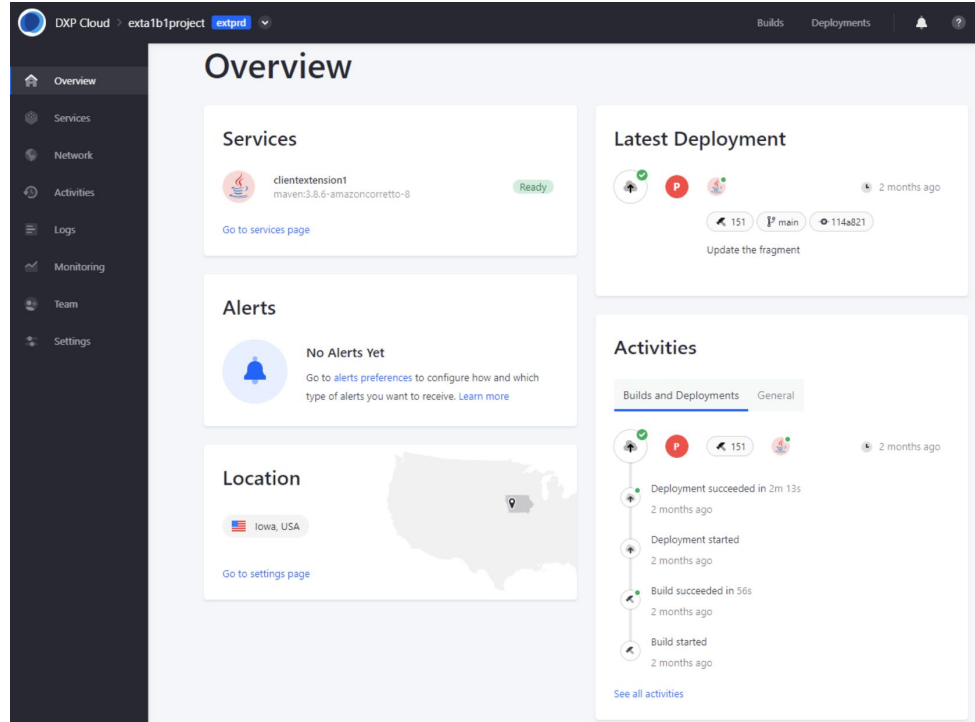


# Start Building with Liferay DXP!



# Cloud Administration Console

- Deploy client extensions
- Monitor client extensions



# Cloud Console Options

Metrics	Information
Overview	A dashboard view of your services, latest deployments, activities, and alert.
Services	Any custom services (i.e., client extensions) that are deployed
Network	Relevant specifications of your extensions
Activities	A list of any extension or user activities
Logs	Area to access logs for your extensions
Monitoring	CPU and memory metrics of your extensions
Team	List of current members who can access the console
Settings	Relevant extension environment information

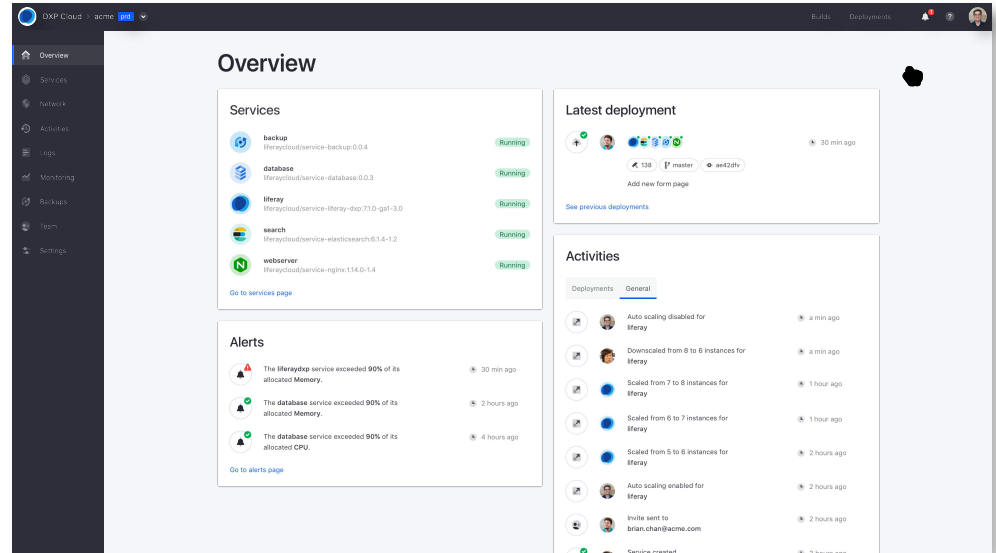


# Part 04

## Working with PaaS

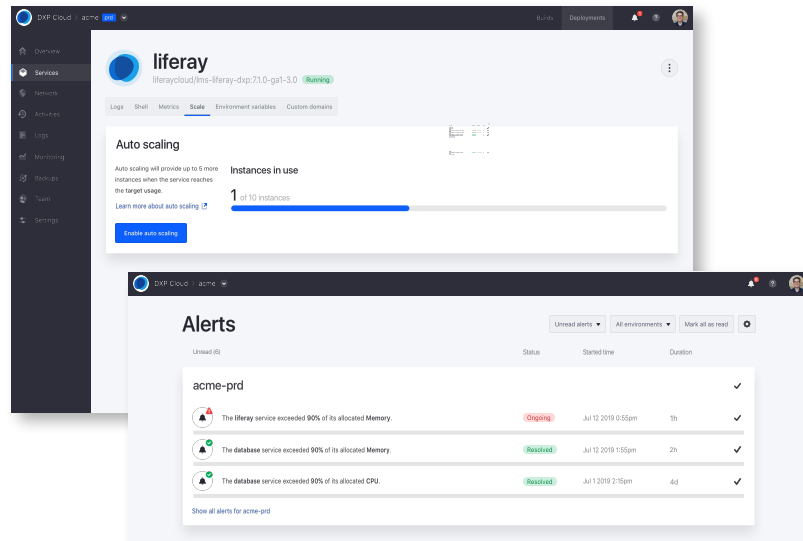
# Web Based Administrative Console

- Clean and simple user interface
- Access and manage the Liferay ecosystem and deployments
- Invite other team members
- Web functions also available via the command line for scripting automation



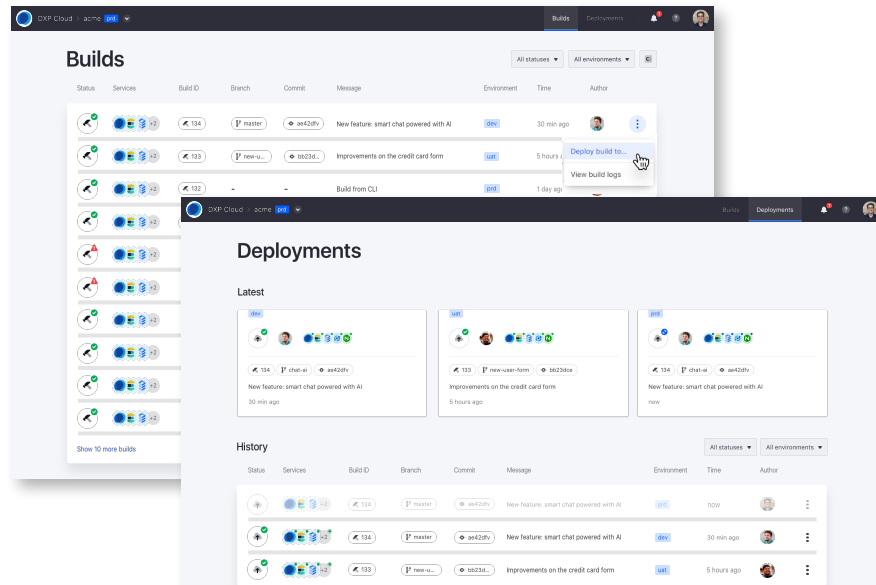
# Cloud, Simplified

- Liferay PaaS built on top of Google Cloud Platform
- Complexity handled behind-the-scenes for you
- Easily switch between Liferay environments
- Trigger backups and restores with a few clicks
- Toggle on/off auto-scaling



# Deploy to any Environment

- Manage your pipeline with Jenkins
- Automatically trigger builds when code is pushed to certain branches
- View build status in the *Builds* section of the Cloud Console
- Choose build => Choose environment => Deploy!
- Zero down time with blue-green deployments





Liferay: Let Liferay manage the clouds, and focus on reaching new heights!

Thank you